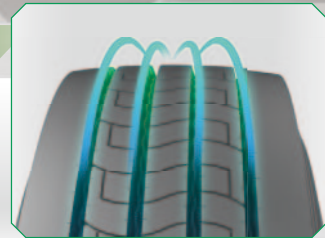


### FEA designed tyre structure

The FEA (Finite Element Analysis) design fully optimizes the tyre structure, effectively reduces the rolling resistance and saves fuel consumption.

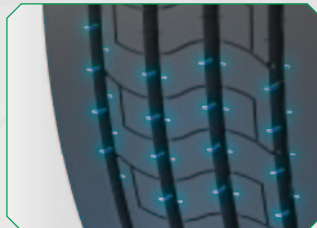
### Enhanced wet traction

Main wide and straight 4 grooves drain water to enhance wet traction and driving confidence.



### Miniature sipes design

The Miniature sipes on the groove edge cab make your driving safe and comfort.



## SIZE

SIZE	PR/LR	LOAD INDEX / SPEED CODE	STANDARD RIM	OVERALL DIA (mm/inch)	SECTION WIDTH (mm/inch)	LOAD	PRESSURE (kpa/psi)	O.T.D (mm/32nds)	TT/TL
295/60R22.5	16 / H	150/147 K (149/146 L)	9.00	926 / 36.5	292 / 11.5	3350/3075	900 / 130	15 / 18.9	TL
295/80R22.5	18 / J	154/149 M	9.00	1044 / 41.1	298 / 11.7	3750/3250	850 / 123	15 / 18.9	TL
315/70R22.5	18 / J	156/150 L	9.00	1014 / 39.9	312 / 12.3	4000/3350	900 / 130	15 / 18.9	TL
315/80R22.5	20 / L	156/150 L (154/150 M)	9.00	1076 / 42.4	312 / 12.3	4000/3350	850 / 123	15 / 18.9	TL
385/55R22.5	20 / L	160(158L) K	12.25	996 / 39.2	386 / 15.2	4500	900 / 130	16 / 20.2	TL
385/65R22.5	20 / L	164(158L) K	11.75	1072 / 42.2	389 / 15.3	5000	900 / 130	16 / 20.2	TL
275/70R22.5*	16 / H	148/145 J	8.25	964 / 38.0	276 / 10.9	3150/2900	900 / 130	18 / 22.7	TL

Urban Use\*