

GTRA1

~ ENGINEERED IN GERMANY ~

Regional All position



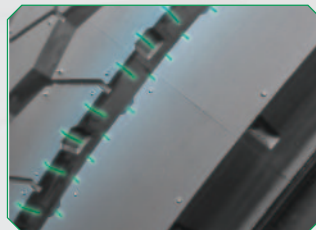
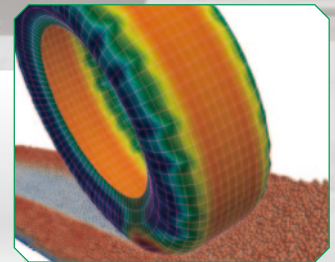
10% Wider

Super wide tread

Super wide tread width and deep grooves offer smooth drive and safe arrival.

FEA designed tyre structure

The FEA (Finite Element Analysis) design fully optimizes the tyre structure, effectively reduces the rolling resistance and saves fuel consumption.



Miniature sipes design

The Miniature sipes on the groove edge can make your driving safe and comfort.

SIZE	PR/LR	LOAD INDEX / SPEED CODE	STANDARD RIM	OVERALL DIA		SECTION WIDTH		LOAD	PRESSURE		O.T.D	TT/TL
				(mm)	(inch)	(mm)	(inch)		(kpa)	(psi)		
215/75R17.5	16 / H	135/133 L	6.00	767	30.2	211	8.3	2180/2060	850 / 123	13 / 16.4	TL	
235/75R17.5	18 / J	143/141 L	6.75	797	31.4	233	9.2	2725/2575	875 / 127	13 / 16.4	TL	
245/70R17.5	18 / J	143/141 K	7.50	789	31.1	248	9.8	2725/2575	900 / 130	13 / 16.4	TL	
245/70R19.5	18 / J	141/140 M	7.50	839	33.0	248	9.8	2575/2500	850 / 123	14.5 / 18.3	TL	
255/70R22.5	16 / H	140/137 M	7.50	930	36.6	255	10.0	2500/2300	825 / 120	14.5 / 18.3	TL	